

TBi Expert Series MIG Torches

Gas-cooled Industrial Series



150 Expert

250 Expert

360 Expert

The TBi Expert handle has been designed to offer perfect ergonomics and appealing aesthetics. The soft rubber areas are directly integrated into the handle and assure comfortable, non-slip handling.

All models offer excellent performance in industrial applications. and are compatible with standard Euro style consumables.

- Modern 2-component handle
- Extremely slim design for effortless use
- Ball joint with defined panning and rotation range prevents twisted hoses in the cable assembly
- Effort-saving weight distribution
- Gripping area is more distanced from weld pool than with our other handles, less heat input on the hand

Visit esab.com for more information.

Industry

- Ship and Offshore Yards
- Repair and Maintenance
- Steel Industry
- Industrial and General Fabrication
- Automotive



With an ergonomic and well balanced handle, the TBi Expert Series ensures best comfort for the welder.

Specifications			
Description	150 Expert	250 Expert	360 Expert
Cooling	Gas		
Welding Output Mixed Gas	150 A at 60%	210 A at 60%	300 A at 60%
Welding Output CO ₂	160 A at 60%	230 A at 60%	330 A at 60%
Wire Diameter	0.6 – 1.0 mm	0.8 – 1.2 mm	0.8 – 1.6 mm
Certification Mark (Standards)	CE (IEC 60974-7)		
Operating Temperature	-10 to +40 °C		
Cable Length	3 m, 4 m, 5 m		

Ordering Information			
Description	3 m	4 m	5 m
TBi 150 Expert with Euro Connection	102P321030	102P321040	102P321050
TBi 250 Expert with Euro Connection	104P321030	104P321040	104P321050
TBi 360 Expert with Euro Connection	114P321030	114P321040	114P321050

Wear Parts – Liners				
Description	Part Number	150 Expert	250 Expert	360 Expert
Steel liner				
0.8 – 1.0, Blue, 3 m	324P154534	x *	x	x
0.8 – 1.0, Blue, 4 m	324P154544	x *	x	x
0.8 – 1.0, Blue, 5 m	324P154554			x
1.0 – 1.2, Red, 3 m	324P204534		x *	x *
1.0 – 1.2, Red, 4 m	324P204544		x *	x *
1.0 – 1.2, Red, 5 m	324P204554			x *
1.2 – 1.6, Yellow, 3 m	324P254534			x
1.2 – 1.6, Yellow, 4 m	324P254544			x
1.2 – 1.6, Yellow, 5 m	324P254554			x
PTFE liner (for Aluminium)				
1.0 – 1.2, Red, 3 m	326P204035	x	x	x
1.0 – 1.2, Red, 4 m	326P204045	x	x	x
1.0 – 1.2, Red, 5 m	326P204055			x
1.2 – 1.6, Yellow, 3 m	326P274735			x
1.2 – 1.6, Yellow, 4 m	326P274745			x
1.2 – 1.6, Yellow, 5 m	326P274755			x
PA/Bronze-Liner (for aluminium and stainless steel)				
0.8 – 1.0, Anthracite 3 m	328P20403A		x	x
0.8 – 1.0, Anthracite 4 m	328P20404A		x	x
0.8 – 1.0, Anthracite 5 m	328P20405A			x
1.2 – 1.6, Anthracite 3 m	328P23473A			x
1.2 – 1.6, Anthracite 4 m	328P23474A			x
1.2 – 1.6, Anthracite 5 m	328P23475A			x

* Supplied as standard

For complete list of wear and spare parts please see separate manual or spare parts list.

TBi Expert Series MIG Torches

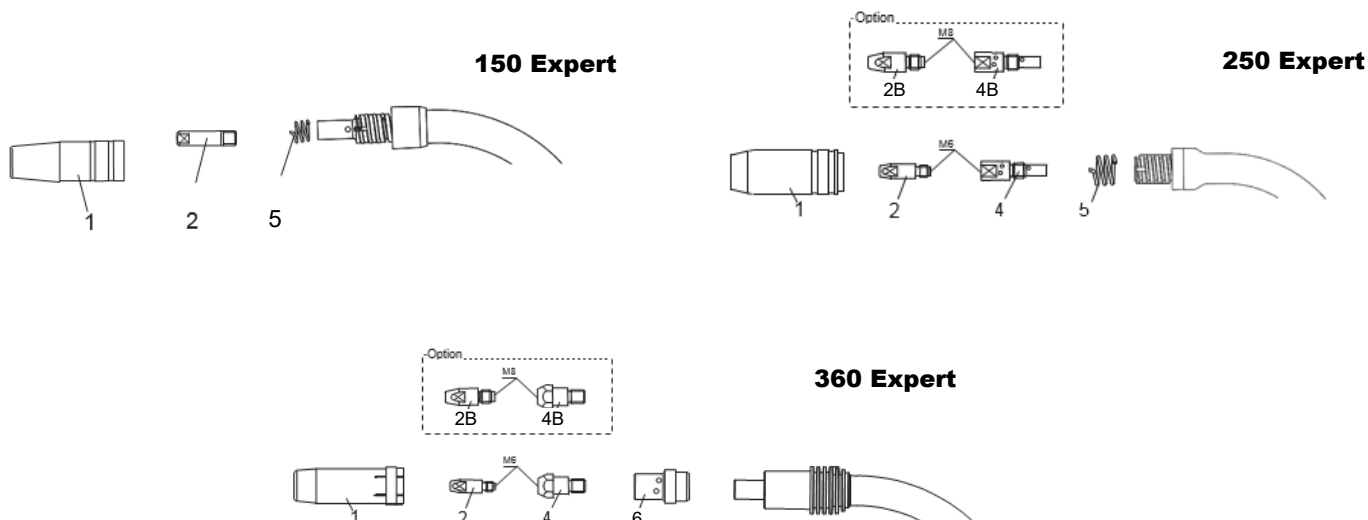
Wear Parts				
No.	Description	150 Expert	250 Expert	360 Expert
1	Gas Nozzle Conical	345P012002 (Ø 12 mm)*	345P012003 (Ø 15 mm)*	345P012010 (Ø 16 mm)*
1	Gas Nozzle Tapered	345P013002 (Ø 9.5 mm)	345P013003 (Ø 11 mm)	345P013010 (Ø 12 mm M6)
1	Gas Nozzle Cylindrical	345P011402 (Ø 16 mm)	345P011303 (Ø 20 mm)	345P011010 (Ø 20 mm)
1	Gas Nozzle FCAW	0700200105 (Ø 6.5 mm)		
4	Tip Adaptor M6		342P006003*	342P006014*
4B	Tip Adaptor M8		342P008003	342P008014
5	Nozzle Spring	102P002011	103P002006	
6	Gas Diffusor			114P002007*

Wear Parts – Contact Tips					
No.	Description	150 Expert	250 / 360 Expert		
		Cu			
2	Contact Tip M6 x 25 Ø 0.6	340P061073			
2	Contact Tip M6 x 25 Ø 0.8	340P081073*			
2	Contact Tip M6 x 25 Ø 0.9	340P091073			
2	Contact Tip M6 x 25 Ø 1.0	340P101073			
			Cu	CuCrZr	Alu Cu
2	Contact Tip M6 x 28 Ø 0.8		340P081069	340P083069	
2	Contact Tip M6 x 28 Ø 0.9		340P091069	340P093069	
2	Contact Tip M6 x 28 Ø 1.0		340P101069* 1)	340P103069	341P101069
2	Contact Tip M6 x 28 Ø 1.2		340P121069* 2)	340P123069	341P121069
2B	Contact Tip M8 x 30 Ø 0.8		340P081262	340P083262	
2B	Contact Tip M8 x 30 Ø 0.9		340P091262	340P093262	
2B	Contact Tip M8 x 30 Ø 1.0		340P101262	340P103262	341P101262
2B	Contact Tip M8 x 30 Ø 1.2		340P121262	340P123262	341P121262
2B	Contact Tip M8 x 30 Ø 1.6		340P161262	340P163262	341P161262

* Supplied as standard

1) 250 Expert 2) 360 Expert

For complete list of wear and spare parts please see separate manual or spare parts list.

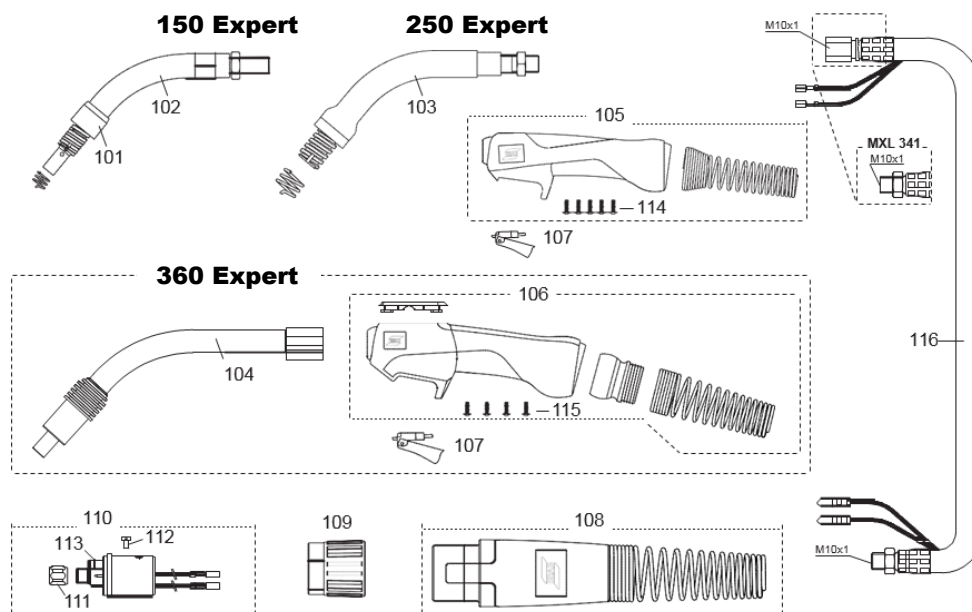


TBi Expert Series MIG Torches

Spare Parts					
No.	Description	Part Number	150 Expert	250 Expert	360 Expert
101	Head Insulator	102P002003	x		
102	Torch Neck 150 Expert	102P001002	x		
103	Torch Neck 250 Expert	104P001008		x	
104	Torch Neck 360 Expert	114P001001			x
105/ 106	Handle Complete Expert	380P230001	x	x	x
	Handle Complete Expert	380P230001	x	x	x
107	Trigger, Red, 2-poles	385P021016	x	x	x
108	Cable Support cpl.	700P001061	x	x	x
109	Adaptor Nut	700P001010	x	x	x
110	Central Connector G	701P001048	x	x	x
111	Liner Locking Nut	701P002005	x	x	x
112	Cylinder Head Screw M4 x 6	100P008401	x	x	x
113	O-ring 4.0 x 1.0 mm (gas nipple)	365P100040	x	x	x
114/ 115	Screw Expert Handle	100P541101	x	x	

Spare Parts - Cables				
No.	Description	3 m	4 m	5 m
116	Coaxial Cable 150 Expert	361POS1130	361POS1140	-
-	Coaxial Cable 250 Expert	361POM1130	361POM1140	-
-	Coaxial Cable 360 Expert	361POLS130	361POLS140	361POLS150

For complete list of wear and spare parts please see separate manual or spare parts list.



ESAB / esab.com

